

**Institute for Translational Medicine and Therapeutics (ITMAT)  
Center for Targeted Therapeutics and Translational Nanomedicine (CT<sup>3</sup>N)**

**CT<sup>3</sup>N Pilot Grants**

CT<sup>3</sup>N invites PENN and CHOP researchers to submit competitive proposals for Pilot Grants by July 31, 2020. The goal of these Pilot Grants is to support early-stage experimental preclinical studies in targeted therapeutics and translational nanomedicine and thus assist investigators in obtaining key data to seek extramural funding. The grants will be for \$40,000 for one year.

**Scope:**

Projects including preclinical (animal, cell culture and in vitro) experimental studies focused on the design of systems for targeted delivery of therapeutics and/or imaging agents, as well as collaborative projects bridging engineering/material science and biomedical aspects of targeted therapeutics are welcome. Proposals will be evaluated based on their relevance to CT<sup>3</sup>N's areas of interest, the interdisciplinary and collaborative character (including use of PENN and CHOP core facilities, such as the Chemical and Nanoparticle Synthesis Core), and innovation and translational potential.

**Eligibility:**

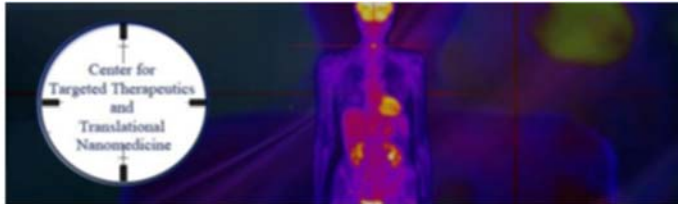
Applicants must be based in the University of Pennsylvania and be a full-time faculty of PENN/CHOP. Joint proposals by co-PIs from PENN /CHOP and CT<sup>3</sup>N members from other institutions (Drexel, Temple, Jefferson, PSU) will be considered. Applicants must be members of ITMAT and CT<sup>3</sup>N, and provide a written commitment to CT<sup>3</sup>N activities including weekly journal club and monthly work-in-progress seminars. The PI's lab can be based at any PENN School or at CHOP. Faculty members from all ranks and tracks are eligible to apply. Investigators in the rank of Senior Investigators and Research Associate may apply on the condition of providing an approval letter from the Department Chair and a letter from the faculty member PI of the lab, assuring that a Research Associate's project represents an independent new extension of the research area of this lab.

**Proposal preparation:**

**Document Submission**

All applications should be submitted via ITMAT's Pilot Grant System at [www.med.upenn.edu/apps/itmat/pg](http://www.med.upenn.edu/apps/itmat/pg). You will need your PennKey username and password to access this system.

- Select **CT<sup>3</sup>N** when creating a new application. All documents can be found at <http://www.itmat.upenn.edu/funding.shtml>; click on **CT<sup>3</sup>N Pilot Grants**.
- Each Investigator and Co-Investigator must have the approval of their respective Business Administrator. *Please ensure that you have liaised with all of the Co-Investigators on your application. This will avoid proposals being rejected by their Business Administrator.*
- **Penn Investigators** should select the Business Administrator that normally signs off on all of their research proposals.
- **CHOP Investigators** must select Berenice Saxon, Prema Sundaram, Michael Campbell, or Robert DeNight as their Business Administrator. **PLEASE ONLY CHOOSE ONE.**
- **Wistar Investigators** must select Jessica Blodgett as their Business Administrator.



- **University of the Sciences Investigators** must select Sarah E. Robertson as their Business Administrator.
- Please ensure that the documents you upload are the final documents. ITMAT will not update or replace files. *This means that prior to hitting the submit button, all documents must be final.*
- All documents must be uploaded by **noon** on the due date of the proposal to ensure time for all approvals. All approvals must be completed by **5 pm** on the due date. **THERE WILL BE NO EXCEPTIONS.** *We suggest you do not wait until noon to start uploading documents.*
- Once all approvals are completed, the grant will be received by ITMAT.
- When contacting the ITMAT business office, please use the same discretion you would employ if contacting an external sponsor.

#### Format

***Please use the provided application and budget templates***

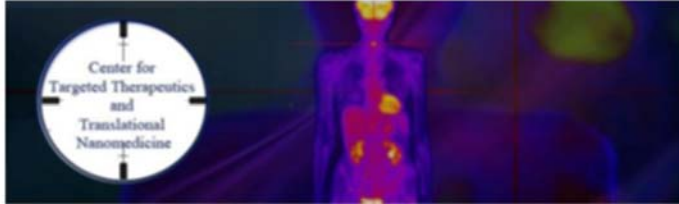
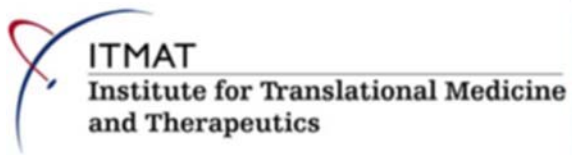
- **Abstract:** Maximum of 300 words, should include a statement of ITMAT membership, commitment to CT<sup>3</sup>N activities, and the title of an approved or pending IACUC protocol if animal studies are proposed. If a pilot grant is awarded, you will be requested to submit your approval letter. **In designing your abstract, please consider that it may also be used as a non-confidential summary of your project.**
- **NIH biographical Sketch**
- **NIH other support page**
- **Budget:** Maximum \$40,000 in direct costs. Budget categories may include salary support for key personnel (no salary support for the PI is allowed), reagents and other supplies, animal purchasing and care.
- **Budget justification**
- **Research Project** (total 2 pages) including:
  - Specific Aims
  - Background
  - Research Plan
  - Summary of anticipated results and their utility for researcher's long-term goals
- **References** (an additional 1 page max)

#### **Award Terms:**

Proposals will be reviewed by the CT<sup>3</sup>N executive committee and funding will be started for one year by September 1. A final progress report is due one month after the close of the project period and should contain a one page description of main findings and their significance, a list of resulting funding, publications, presentations and collaborations.

#### **Support from ITMAT/CT<sup>3</sup>N should be acknowledged in any publications evolving from the project:**

- "Supported in part by the Institute for Translational Medicine and Therapeutics of the Perelman School of Medicine at the University of Pennsylvania."
- "Research reported in this publication was supported by the National Center for Advancing Translational Sciences of the National Institutes of Health under Award Number UL1TR001878."



The content is solely the responsibility of the authors and does not necessarily represent the official views of the NIH.”

### **Application or Funding Questions**

Please direct questions related to eligibility and fit with the scope of CT<sup>3</sup>N to Dr. Muzykantov, [muzykant@mail.med.upenn.edu](mailto:muzykant@mail.med.upenn.edu). Please address questions related to the application process to Charlie Molli, [cmolli@upenn.edu](mailto:cmolli@upenn.edu), or Andrea Albelda, [aalbelda@penmedicine.upenn.edu](mailto:aalbelda@penmedicine.upenn.edu).