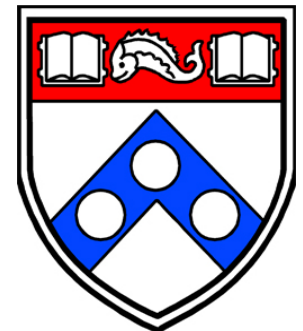


**Penn Medicine**

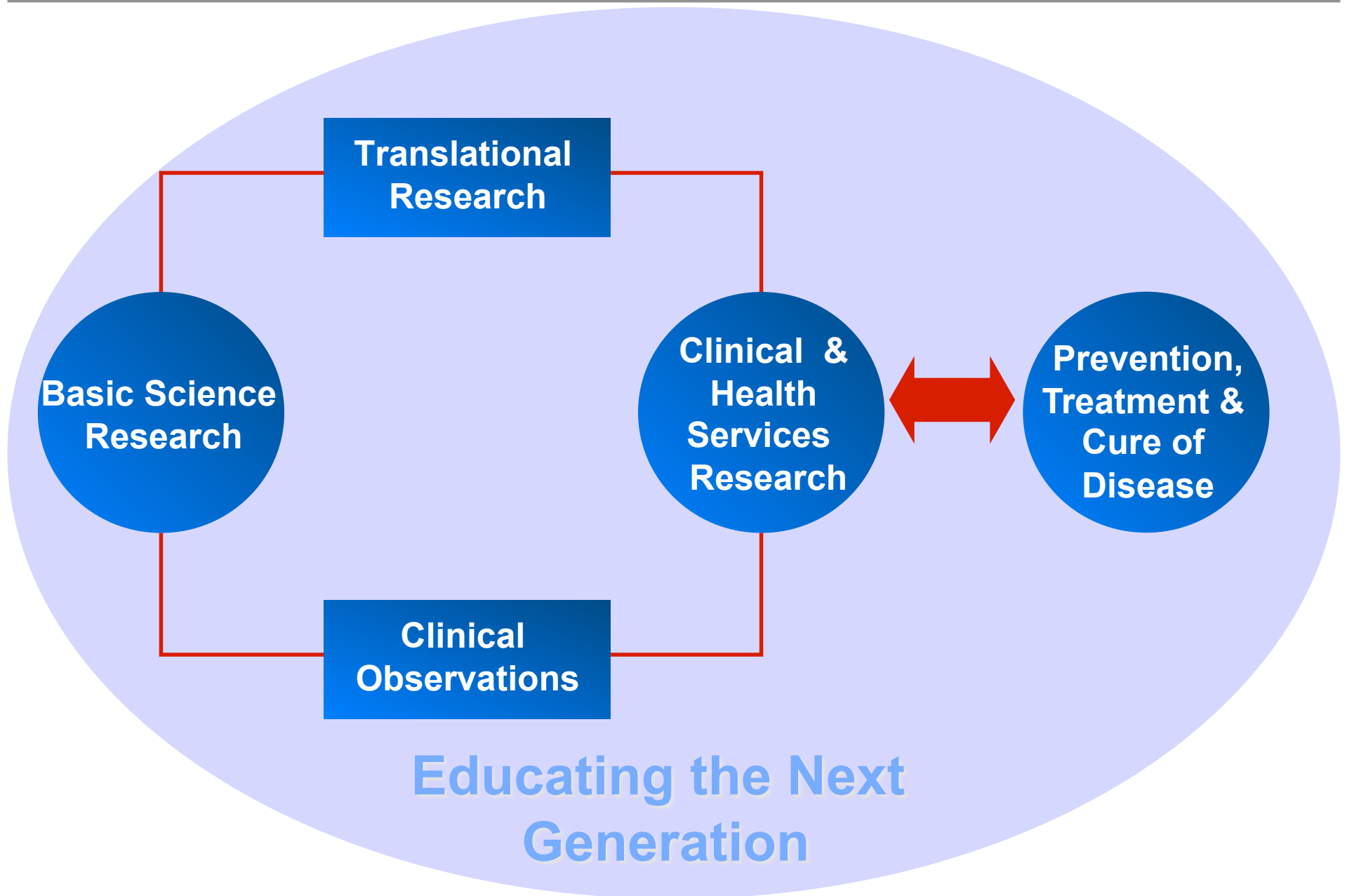
---

**2010 ITMAT Symposium**

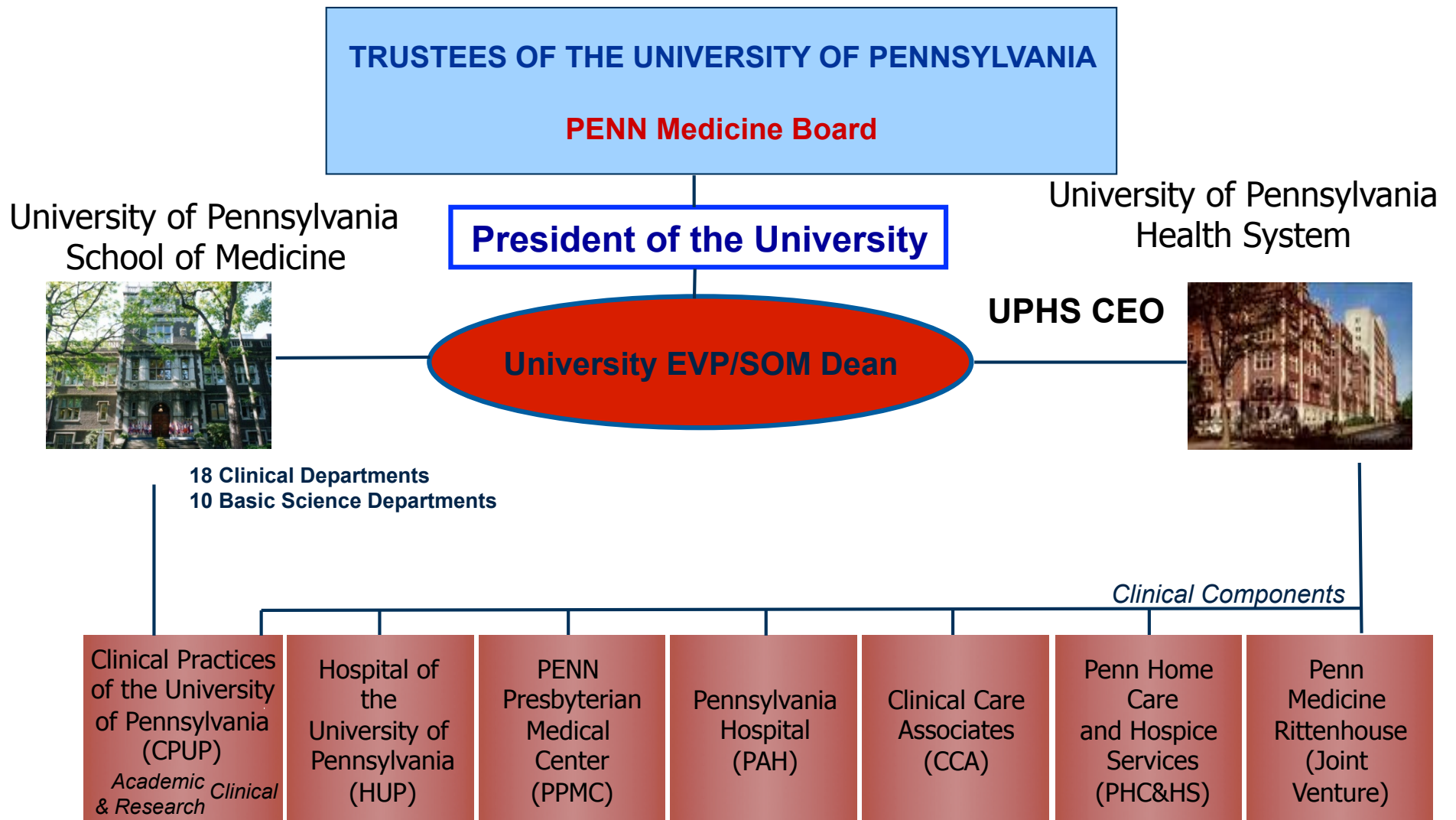
**Arthur H. Rubenstein, MBBCh**  
**October 26, 2010**



# Academic Medicine



# Penn Medicine Organization



# **Penn Medicine Strategic Plan**

## *Leadership*

**Become a more collegial, intellectually exciting, and supportive institution in which to work**

**Develop world leading programs in selected areas of research**

**Build superb clinical programs that distinguish Penn Medicine in the marketplace**

**Establish undisputed leadership in patient care quality**

**Provide highest quality educational programs and attract most competitive students and trainees**

**Implement a new leadership, operational and financial model for academic medicine**

# Centers/Institutes and Programs

## ◆ Long-standing examples

- Abramson Cancer Center
- Center for Aids Research
- Center for Clinical Epidemiology and Biostatistics
- Institute on Aging
- Leonard David Institute
- Mahoney Institute of Neurological Sciences

# Centers/Institutes and Programs

## ◆ More recent examples

- Institute for Translational Medicine & Therapeutics
  - Clinical and Translational Science Award
- Cardiovascular Institute
- Comprehensive Neuroscience Center
- Institute for Diabetes, Obesity & Metabolism
- Center for Digestive, Liver and Pancreatic Medicine
- Institute for Regenerative Medicine
- Immunology Institute
- Program in Epigenetics

# Implementation Strategies

---

- ◆ Distributed Leadership Model
  - Metric Driven Decision Making
- ◆ Research Advisory Council
- ◆ Recruitment Advisory Committee
- ◆ Strategic Space Planning
- ◆ Academic Development Advisory Committee (Positions & Resources)
- ◆ Integrated Academic Leadership Meetings
- ◆ Leadership Incentive Plan
- ◆ Office of Corporate Alliances

# The Translational Research





# The Translational Research

## ◆ Center What Makes TRC Unique

- Translational medicine = translating basic science into clinical trials and cures at swifter pace
- Physically unites researchers and clinicians under one roof, and adjacent to:
  - State-of-the-art Perelman outpatient center, which houses Abramson Cancer Center
  - Roberts Proton Therapy Center
- Dedicated to tackling most difficult diseases of today



